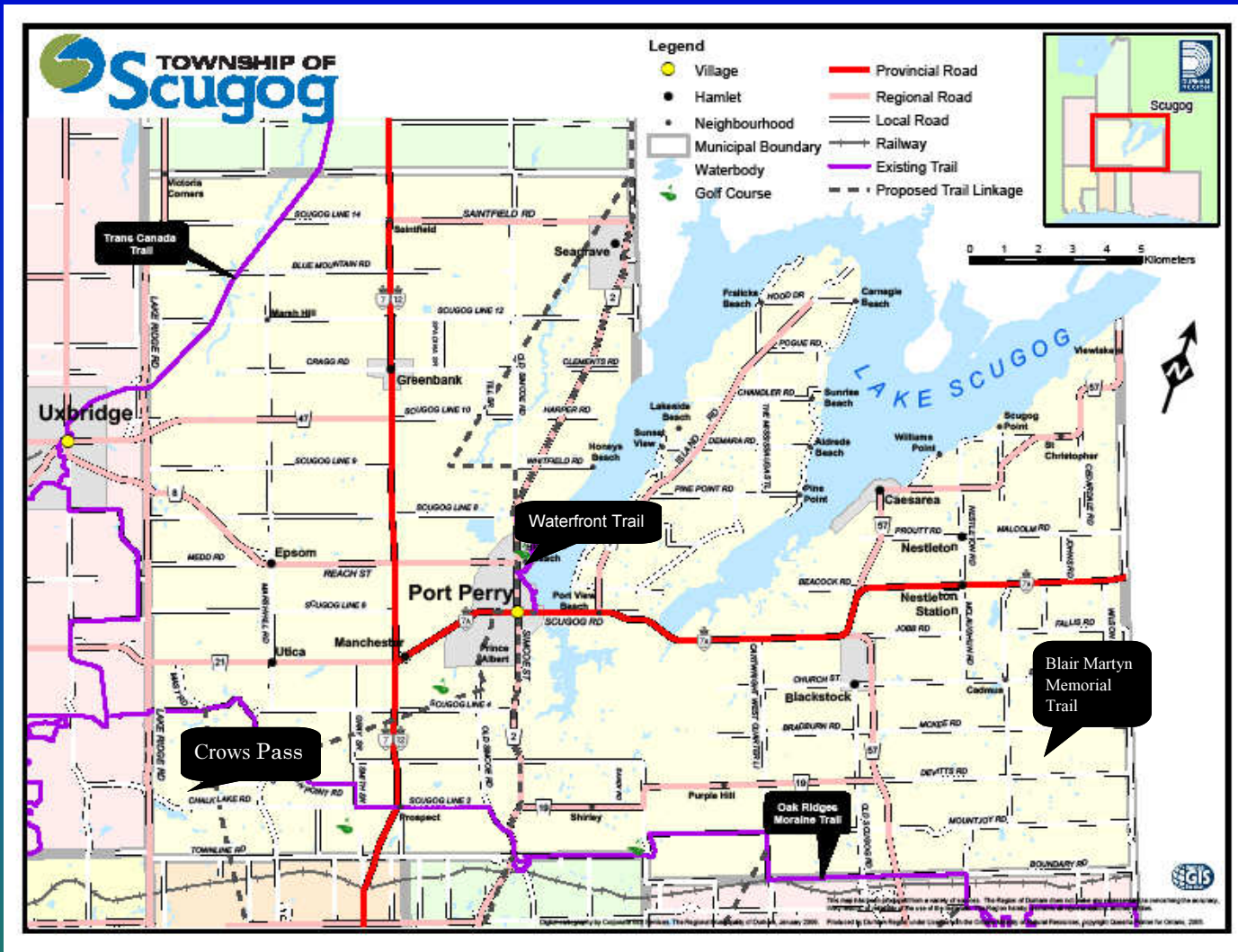


www.scugog.ca



**Parks, Recreation & Culture
Department**
 181 Perry Street
 Port Perry, Ontario
 L9L 1A7
 905-985-7346
parksrec&culture@scugog.ca
 Hours: 8:30-4:30 Monday-Friday
www.scugog.ca

Scugog Trail System



Come and see
what Scugog has
to offer!



Port Perry Waterfront Trail System

This popular trail primarily follows the lakefront extending from just north of Canterbury Common to Hwy 7A. The trail consists of a variety of scenic areas and is mostly limestone-based with some paved and woodchip areas which makes it perfect for walking, biking and jogging. The trail is perfect for beginners & intermediate level.



Canterbury Common Loop-2.4km:

Wander down the Canterbury Common Trail at the east end of Coulter St. Enjoy the view of both the Waterfront and the golf course & gardens within the subdivision. Outlook at point.

Rotary Environmental Park-1.5km:

Take a stroll along this trail and enjoy the natural beauty. Begin your journey at the Rowing Clubhouse and Municipal Boat Launch area and continue on with a walk along the natural shoreline with a loop back on the old railway lane. This trail also incorporates a fully accessible boardwalk

Birdseye Nature Walk-1.0km:

Come and enjoy the scenic view along the Birdseye Nature walk beginning between the Marina and Library.

Millenium Trail 1.5km:

Begin your stroll at the Palmer Park beach. Take in all the naturalized plantings and the unique bridge crossing, looping back to Water St. by Curts St.



Rotary Park

South Port Perry Trail System

The South Port Perry Trail System consists of a variety of trail loops and features. It runs through a wide range of parkland, storm water management systems and park linkage areas. This system is perfect for people of all activity levels and is great for walking, biking and jogging. The main loops that make up this system are:

Victorian Village Loop-1km: Enter this unique loop just off of Union Avenue. The path dips down into

Pond-viewing area, this area is prone to flooding so exert caution. Exit at Ash and follow Hyland St. to Alma St. linkage and Poplar Park.



Perryview Park Loop-2km: This loop includes Robins Trail and Perryview Park (future Dr. Bruce Park) and connects to the Victorian Village Loop through various linkages. It is a combination of paved and limestone paths. Enjoy the various playgrounds and scenic views while strolling along this loop. Enter this trail at Oddfellows hall, Greenway or Robins Trail.

Hyland St./Alma Street/Pine Court

Linkage Loop: These links connect the South Port Perry Trail. Watch for signs.



Victorian Village

Multi-Use Trails

The Township of Scugog is home to a wide variety of multi-use trails that are available for everyone to enjoy. Enjoy a leisurely hike in the Spring, Summer and Fall or if you prefer something a little more challenging try out the horseback riding and mountain biking trails.

Cawker's Creek Trail

This Trail development is currently underway and includes the lands of Scugog Centre Parkland, Cawker's Creek River Valley; from the Ravines at Cawker Creek to Victoria St.

Cartwright Fields Trail-.5km

Beautiful scenery for the whole family to enjoy, this trail is perfect for the nature lover at heart. Surrounded by gorgeous trees and nature this wood chip surface trail is the perfect trail to enjoy a leisurely stroll on. Enter to the west side of the parking area.

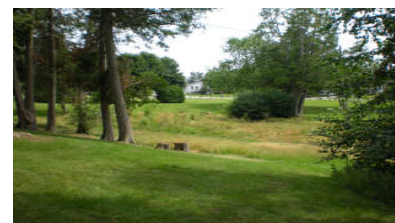
Blair Martyn Memorial Trail-3.5km

Located in the East Cross Forest at 4560 Devitt's Road this trail is a beautiful, multi-use trail on the Oak Ridges Moraine. Open Daily to hikers, horse back riders, and mountain bike enthusiast.

Coming Soon!

Port Perry Water Front Trail; new loop that will extend behind Vos Independent Grocer to Hwy 7A.

Ravines of Cawker Trail-Phase one; extending from Reach St. to subdivision limit.



Other Community Trails

Come and enjoy the wide variety of scenic trails located throughout the Township of Scugog. The trails range from educational trails for the whole family to conservation trails which incorporate a variety of levels of difficulty for all levels of activity.

Snowmobile Trail-190km

190 km of trails including a major section of TOP Trail E108. Please visit the Port Perry Snowmobile Club website for more information regarding this trail system at www.portperrysnowmobileclub.com or www.cartwrightdynos.com.

Crow's Pass-2.2km

Run by CLOCA this trail is accessible from Middle March Road and is a year round trail. People of all activity levels can enjoy hiking, cross country skiing, wildlife viewing, picnicking and nature studies along this trail. Please visit www.cloca.com for trail maps and more details.

Maple Trail-.53km

This linkage connects two points of Crow's Pass Trail and allows for even further year round activity including hiking, cross country skiing, snow shoeing and wildlife viewing.

Nonquon Educational Centre Trail

Enjoy the many kilometers of boardwalks at Nonquon. Please visit the Durham District School Board web site at ww.durham.edu.on.ca for more details.

Oak Ridges Moraine Trail-33km

Approximately 33km of this trail is situated within the Township of Scugog and is located on unopened road allowances within both Municipal and Conservation property. Visit www.oakridgestrail.org or www.moraineforallife.org for routes in Scugog.